



Robot Structural Analysis Professional

Installing Stalatube profiles for Autodesk Robot Structural Analysis

Download profile catalogue files from link below:

<https://stalatube.com/toolkit/design-libraries/>

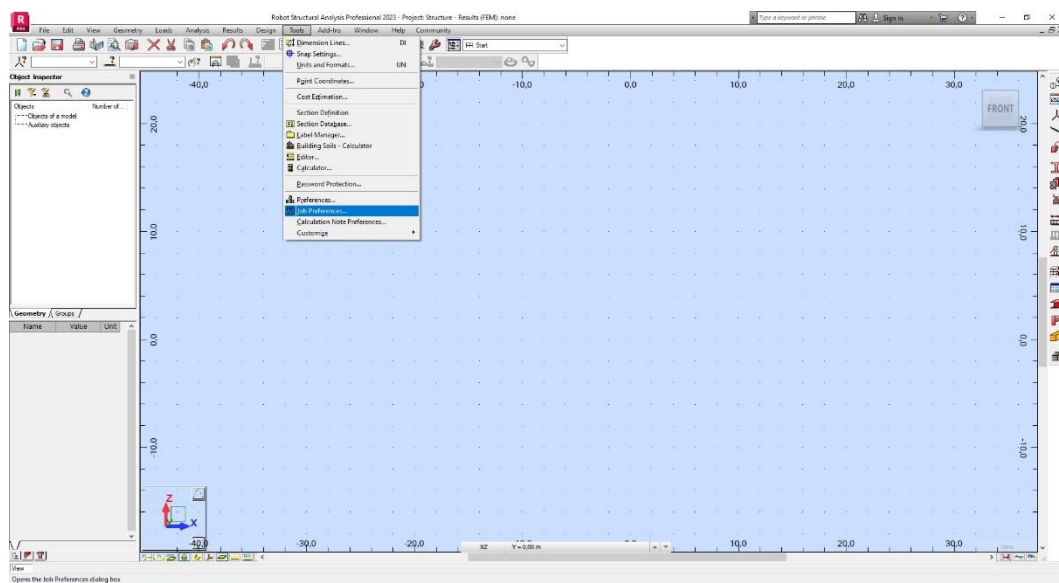


Extract file to desired
location

1/8/2024

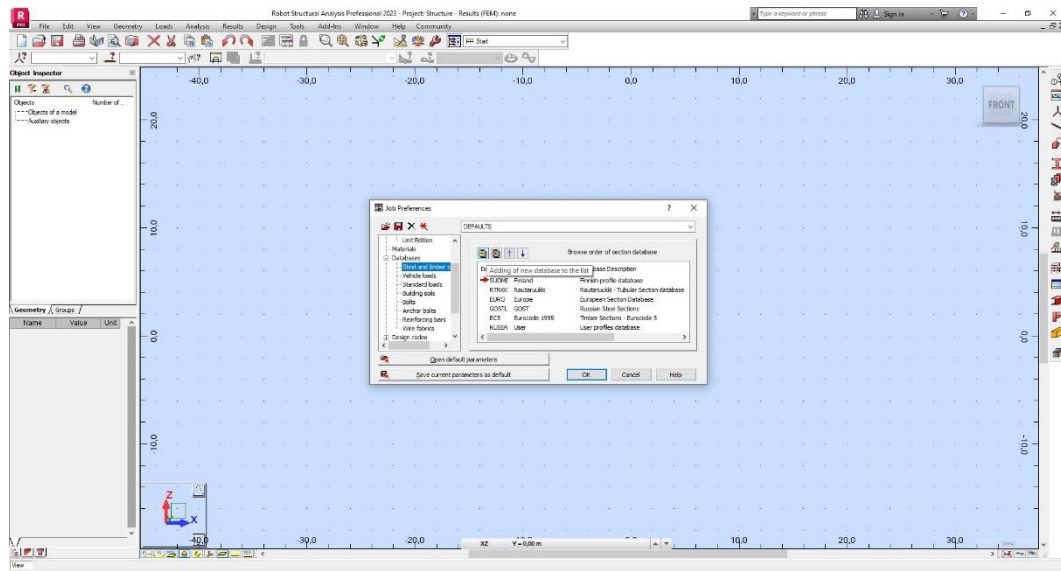
Add profile catalogue to Robot:

- All Profile databases can be found in:
C:\Program-Data\Autodesk\Structural\Common Data\<program version>\Data\Prof
- To add a new profile database to program, go to:
Tools -> Job Preferences



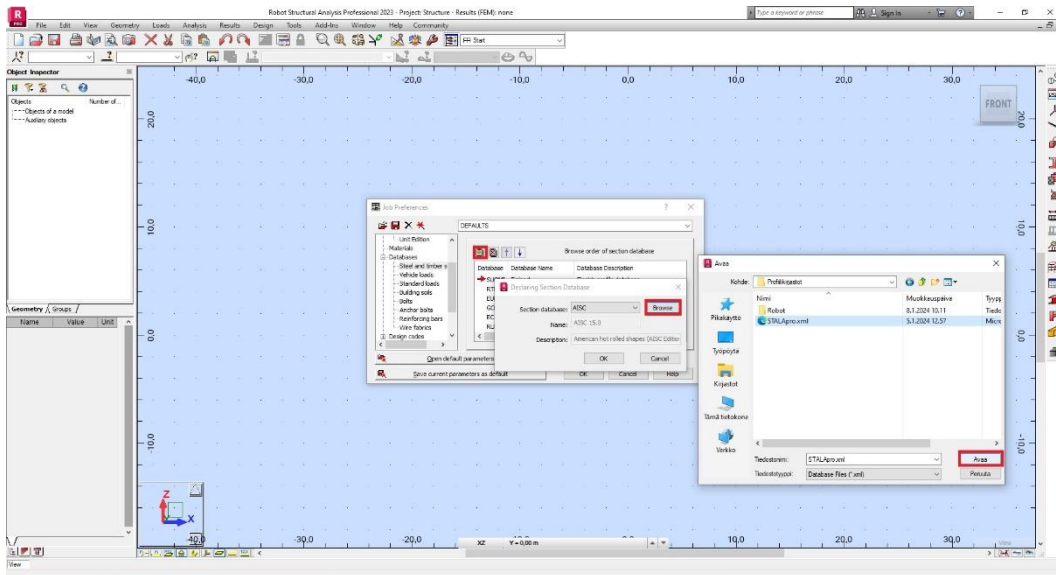
1/8/2024

1. Under Databases, select “Steel and timber sections” -> “Adding of new database to the list”

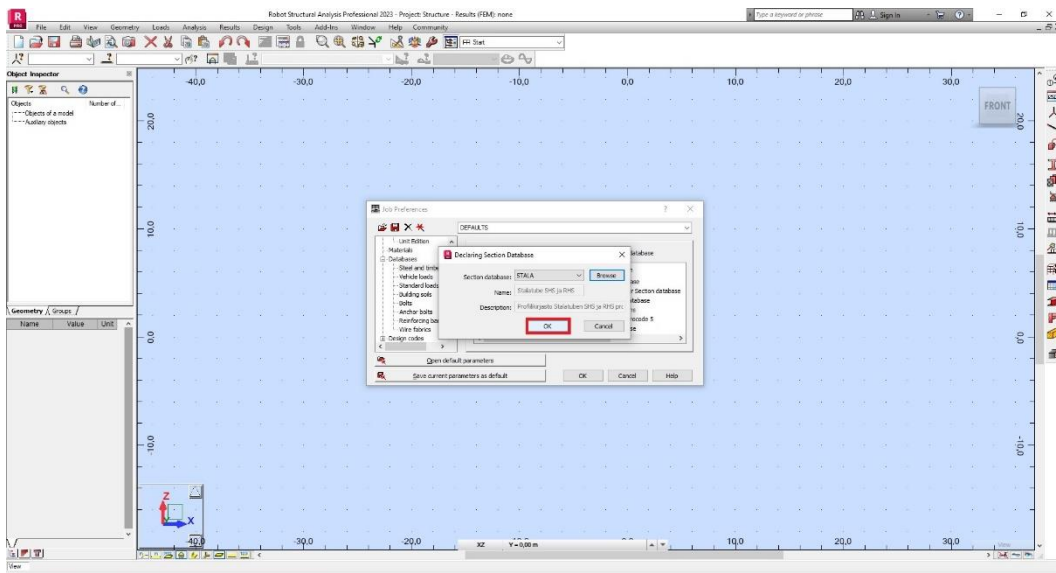


1/8/2024

2. In the “Declaring Section Database” window, Click Browse -> Find extracted file”STALApr.xml” and open it

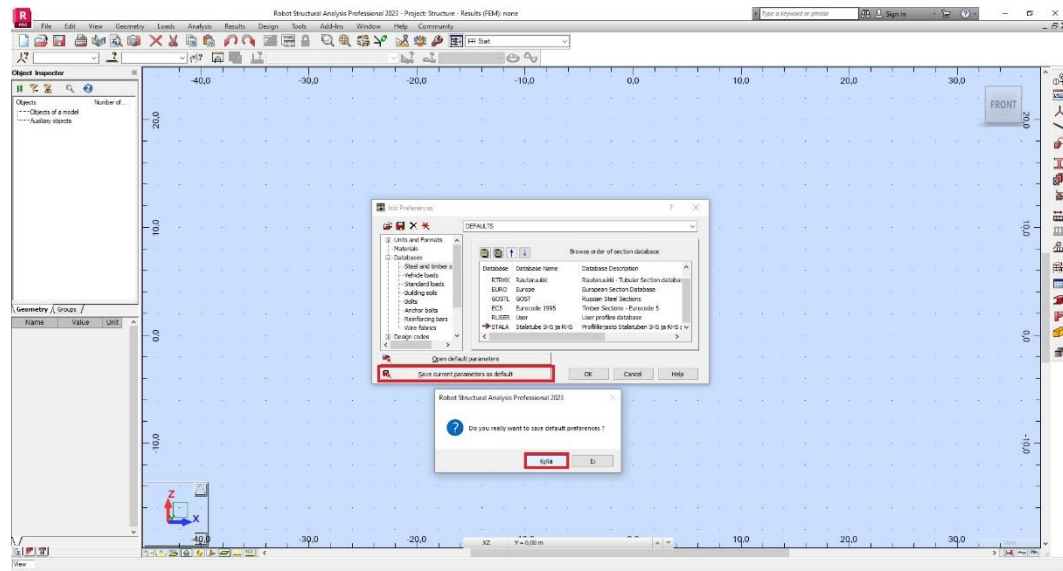


3. Click OK in the “Declaring Section Database” window



4. To save database for future use, select “Save current parameters as default” and Click Yes

1/8/2024

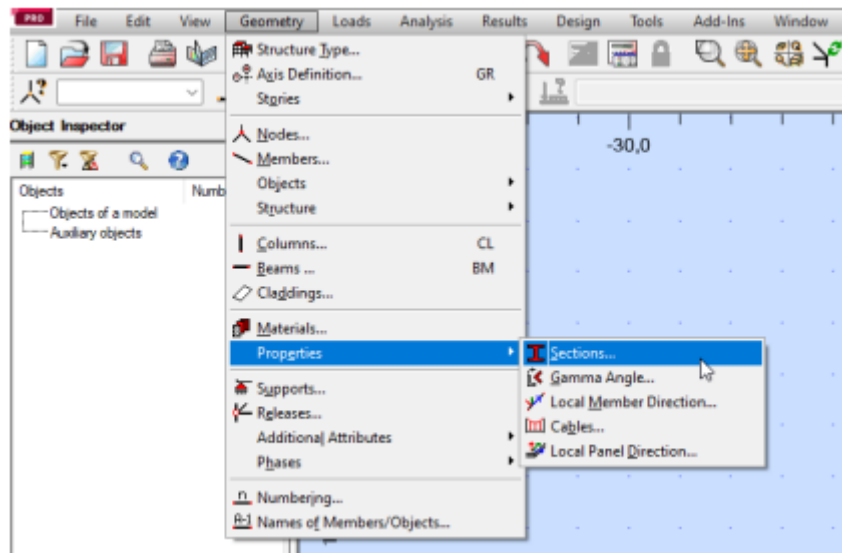


1/8/2024

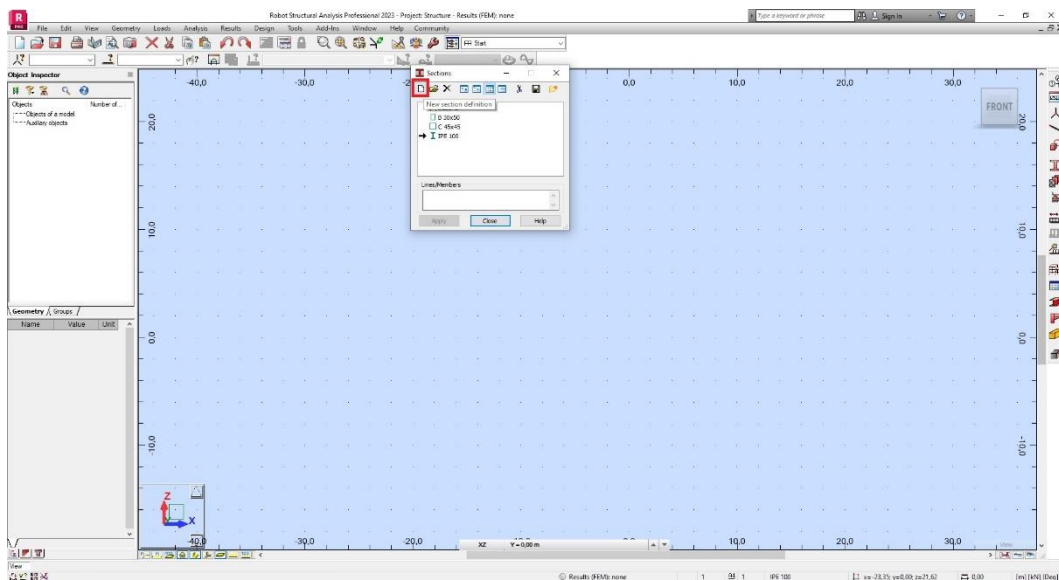
Use added Stalatube profiles in Robot:

1. Open Sections window

Geometry -> Properties -> Sections



2. Select “New section definition”



3. Select Database and Section from drop-down lists

1/8/2024

